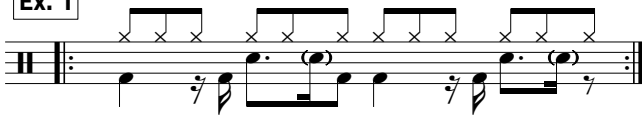


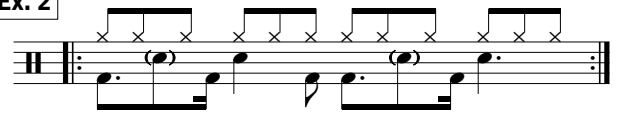
## DEVELOPING 12/8 BLUES: BASS & SNARE DRUM VARIATION

These grooves will contain both bass drums and snare ghost notes within any beat of the bar. Hopefully this will lend to new creative freedom when playing within this style. These grooves also sound good at higher tempos, the likes of which can be heard on many recordings!

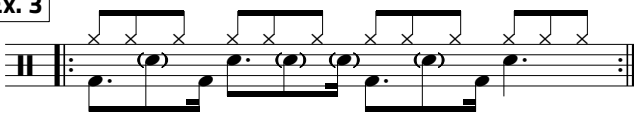
Ex. 1



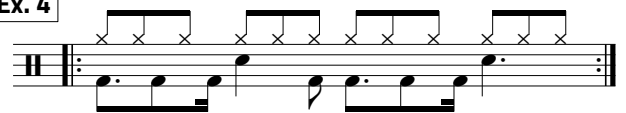
Ex. 2



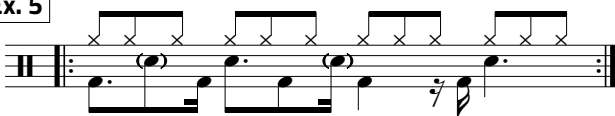
Ex. 3



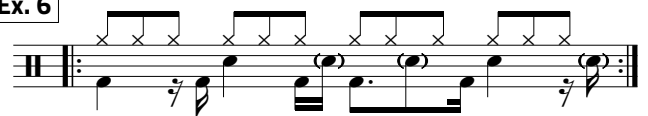
Ex. 4



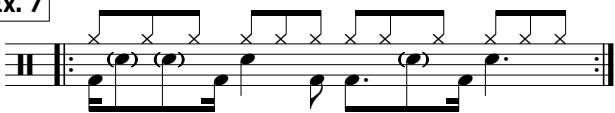
Ex. 5



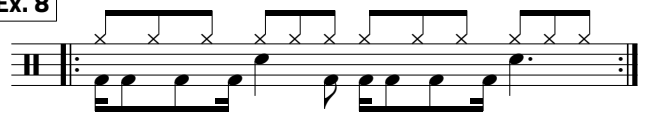
Ex. 6



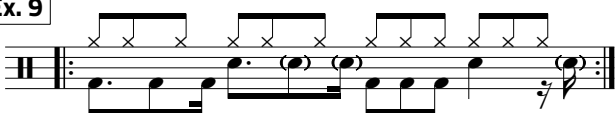
Ex. 7



Ex. 8



Ex. 9



Ex. 10

