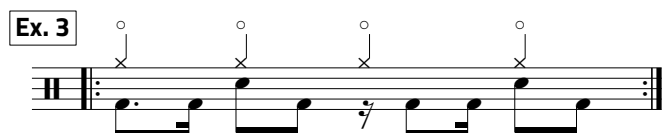
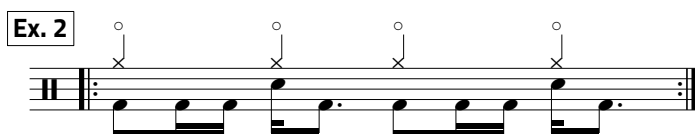
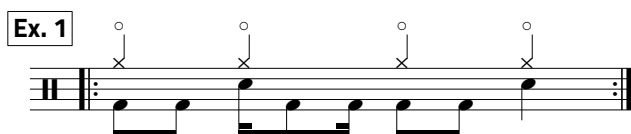


## METAL - INTRODUCTION

We usually associate Metal drumming with **double bass**. While this is often true, there are still other characteristics that we can work on ahead of getting to this. Features for Metal drumming include **loose hats**, **syncopated** kick patterns, **grooves on** the crash or toms, **half-time** feels, and **breakdowns**.

Lets practice each of these things seperately:

### LOOSE HATS / SYNCOPATED KICK PATTERNS:



### GROOVES ON THE CRASH / TOMS:



### HALF-TIME FEEL / BREAKDOWNS

